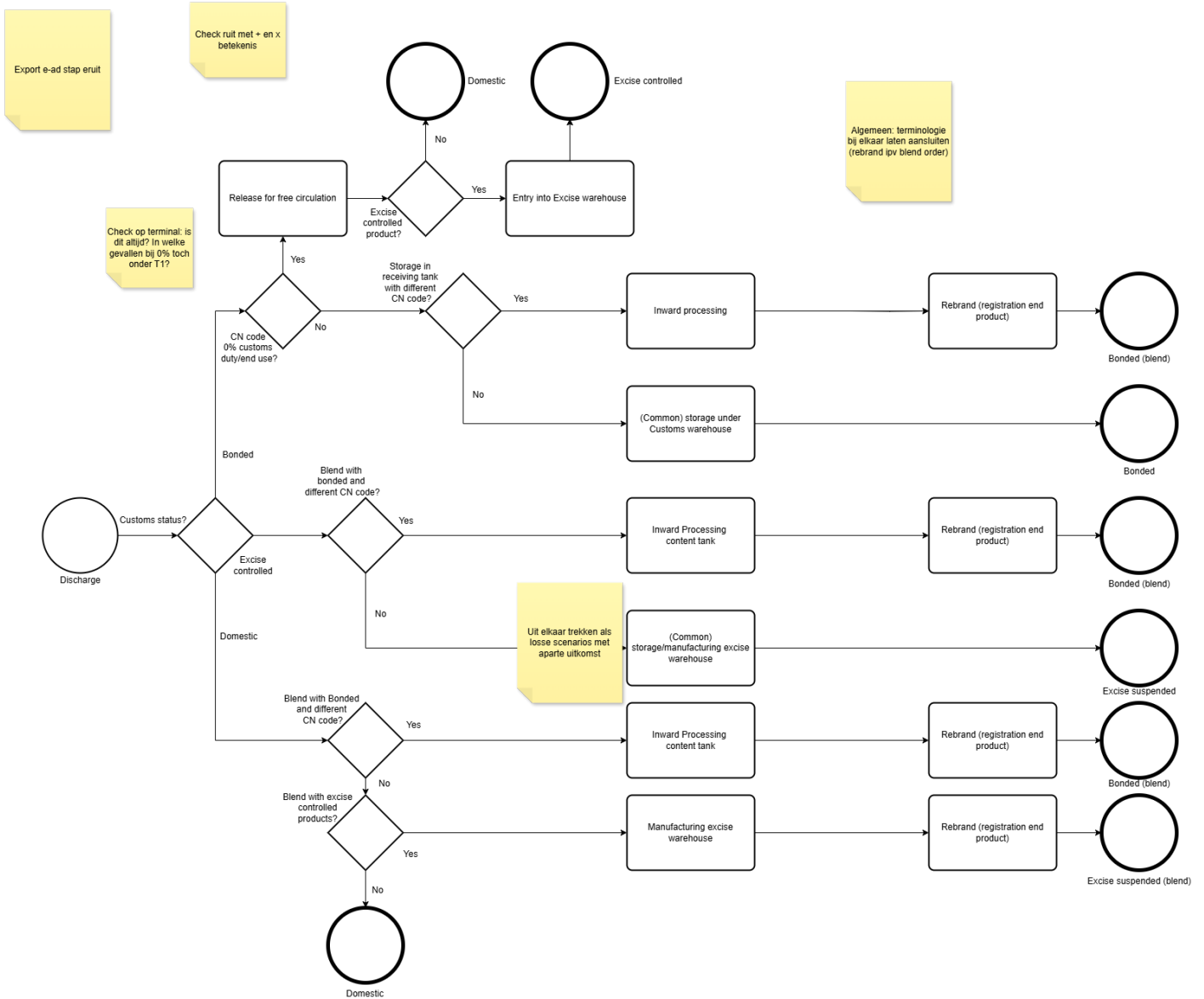


# Discharge

When receiving goods, the following processes are applied to ensure proper recording in VTTI's record keeping and lodging of the required customs declarations.



The procedure that is followed by CS and OPS is included as annex. Please note that this is an EU wide procedure and may cover activities that are not applicable to the respective country (e.g. operations at buoys).

A link to VTTI's "C&E - Discharge procedure" is included here.

Related work instructions to discharges are available in QOL.

---

Revision #8

Created 26 May 2026 08:26:28 by Kenneth Veninga

Updated 2 June 2026 14:56:57 by Kenneth Veninga